

TRINITY CHAPEL ACADEMY HIGH SCHOOL

Understanding Your PSAT Results

Patricia R. Jackson
High School Counselor



Why take the PSAT?

- **Preliminary SAT**
- **To receive feedback on your strengths and weaknesses on skills necessary for college study**
- **To see how your performance on an admissions test might compare with that of others applying to college**
- **To help prepare for the SAT**
- **To enter the competition for scholarships from the National Merit Scholarship Corporation**
- **AP Potential Report**



Understanding Your PSAT/NMSQT Results

4 Major Parts of Your PSAT/NMSQT Results

Your Scores

Your Skills

Your Answers

Next Steps

3 Test Sections

Critical Reading

Mathematics

Writing Skills

Name: STUDENT, M.A.B. Year: 2011 Grade: 11 School Code: 123456 District Code: 00 Student Copy

View your score. For more information on your projected SAT[®] scores at www.collegeboard.org/quickstart.

Score Range Scores in this range

Organization & Ideas
2 of 8 questions correct (2 omitted)

Data, Statistics & Probability
6 of 8 questions correct (1 omitted)

Correctly Formed Sentences
1 of 6 questions correct (4 omitted)

Understanding Literary Elements

Relationships of Sentences & Paragraphs

Get suggestions for improving your skills before you take the SAT.

See test questions and review explanations of the answers at

Next Steps


Go online to see your projected SAT scores, learn how to improve them, and find critical college and career planning information.

On test day, you told us that you're interested in **Sport & Fitness Administration**. To learn more about college majors, visit MyCollege QuickStart[™]. There you can also:

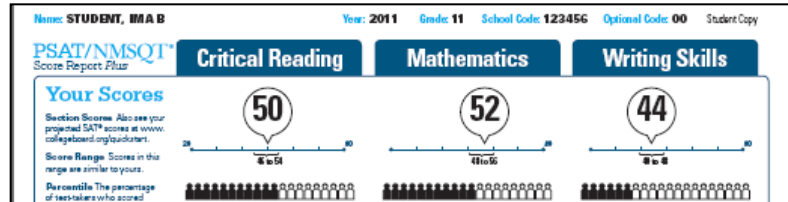
- Learn about related careers
- Search for colleges
- Take a personality test

Take the next step today! Go to www.collegeboard.org/quickstart and sign in using your code below.

Online Access Code
A#2670146P



National Merit Scholarship Corporation Information



National Merit Scholarship Corporation

National Merit Scholarship Corporation (NMSC) uses a Selection Index based on PSAT/NMSQTSM scores as an initial screen of over 1.5 million students who enter its scholarship programs. (See reverse for more information.)

Your Selection Index
Sum of scores in critical reading, mathematics and writing skills.
146

Percentile
Compares your performance with college-bound juniors.
47

Entry Requirements
(Information you provided on your answer sheet.)

High school student: **Yes** U. S. citizenship: **Yes**

Year to complete high school and enroll full-time in college: **2013**

Years to be spent in grades 9–12: **4**

Eligibility Information
If your Selection Index places you among the 55,000 high scorers who qualify for program recognition, you will be notified next September.

The Selection Index is the sum of your critical reading, mathematics and writing skills scores.

If it has an asterisk, you do not meet all of the eligibility requirements for the competition.

The Percentile compares your performance to that of other college-bound juniors.

The Entry Requirements section displays information you provided on your answer sheet.

Online Access Guide

UTILIZATION & TERMS

CRITICAL READING
6 of 8 questions correct (1 omitted)

MATHEMATICS
6 of 8 questions correct (1 omitted)

WRITING SKILLS
1 of 6 questions correct (4 omitted)

Relationships of Sentences & Paragraphs
2 of 6 questions correct (3 omitted)

Get suggestions for improving your skills before you take the SAT.
www.collegeboard.org/quickstart

Question	Correct Answer	Your Answer	Correct Answer	Your Answer	
1	D	✓	13	D	m
2	G	✓	16	E	m
3	G	✓	17	A	C h
4	C	✓	18	E	h
5	D	✓	19	D	A h
6	D	✓	20	D	C h
7	C	o	21	B	✓
8	A	✓	22	C	✓
9	B	✓	23	A	✓
10	C	✓	24	D	✓
11	B	o	25	B	✓
12	C	✓	26	D	✓
13	D	✓	27	C	h
14	A	D	28	A	h

Correct Answer Year Answer

29	7	✓	m
30	3	o	m
31	8.5 or 9.2	o	m
32	1000	✓	m
33	10, 12, 14, or 16	✓	h
34	25 or 10	o	h
35	39	✓	h
36	104	50.9	h
37	48	8.2	m
38	8	10	h

Find out why you missed questions.
www.collegeboard.org/quickstart

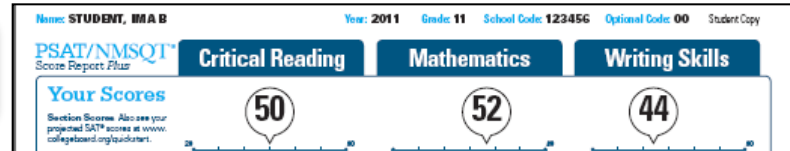
Take the next step today! Go to www.collegeboard.org/quickstart and sign in using your code below.

Online Access Code
A#2670146P

My College Quickstart™ Thank you can also:
• Learn about related careers
• Search for colleges
• Take a personality test



Your Skills



Your Skills

These skill categories can help you understand your score and focus your study efforts before you take the SAT.

To learn more about your skills and review suggestions for improvement based on your test performance, visit www.collegeboard.com/quickstart and sign in using your code below.

Online Access Code

A02670146P

Determining the Meaning of Words

9 of 15 questions correct (0 omitted)

Author's Craft: Style, Tone & Technique

3 of 5 questions correct (0 omitted)

Reasoning & Inference

8 of 10 questions correct (2 omitted)

Organization & Ideas

2 of 8 questions correct (2 omitted)

Understanding Literary Elements

4 of 10 questions correct (0 omitted)

Number & Operations

12 of 15 questions correct (1 omitted)

Algebra & Functions

5 of 5 questions correct (0 omitted)

Geometry & Measurement

8 of 10 questions correct (2 omitted)

Data, Statistics & Probability

6 of 8 questions correct (1 omitted)



Get suggestions for improving your skills before you take the SAT.
www.collegeboard.com/quickstart

Grammatical Relationships between Words

3 of 12 questions correct (1 omitted)

Words & Phrases Used to Modify or Compare

1 of 5 questions correct (2 omitted)

Phrases & Clauses

6 of 10 questions correct (2 omitted)

Correctly Formed Sentences

1 of 6 questions correct (4 omitted)

Relationships of Sentences & Paragraphs

2 of 6 questions correct (3 omitted)

See how you did on each skill. The same skills are tested on the SAT.

You can try hundreds of practice questions, organized by skill, online in My College QuickStart (www.collegeboard.org/quickstart).

source for a copy of your

6 D ✓ * 26 A ✓ *
7 A C m 27 A B *
8 C E h 28 C A *
9 C D m 29 C A m
10 A C h 30 D ✓ m
11 B E h 31 B A h
12 B E m 32 A ✓ h
13 D C m 33 D C h
14 D E m 34 D ✓ *
15 B C * 35 E A *
16 B ✓ m 36 A D *
17 D ✓ * 37 B ✓ m
18 A B m 38 C ✓ m
19 C E m 39 C ✓ h
20 E ✓ m

Find out why you missed questions.
www.collegeboard.com/quickstart

Next Steps

Go online to see your projected SAT scores, learn how to improve them, and find critical college and career planning information.

On test day, you told us that you're interested in **Sport & Fitness Administration**! **Stay on top!**

To learn more about college majors, visit My College QuickStart[™]. There you can also:

- Learn about related careers
- Search for colleges
- Take a personality test

Take the next step today! Go to www.collegeboard.org/quickstart and sign in using your code below.

Online Access Code
A02670146P

Your Answers

You will get your test book back with your PSAT/NMSQT results, so that you can review the questions.

You can also review each test question in My College QuickStart.

Name: STUDENT, IMA B Year: 2011 Grade: 11 School Code: 123456 Optional Code: 00 Student Copy

PSAT/NMSQT[®] Score Report Plus

Critical Reading

Question	Correct Answer	Your Answer	Difficulty
1	A	✓	e
2	B	✓	e
3	A	C	m
4	C	A	h
5	B	E	h
6	D	✓	e
7	B	✓	m
8	D	o	e
9	B	✓	m
10	E	B	h
11	D	✓	h
12	C	✓	m
13	A	✓	m
14	B	A	m
15	A	✓	e
16	C	✓	m
17	A	✓	e
18	E	✓	m
19	B	✓	m
20	B	E	m
21	E	✓	m
22	D	B	h
23	E	✓	m
24	A	✓	m

Mathematics

52

You scored higher than 57% of juniors.

Writing Skills

44

You scored higher than 39% of juniors.

Key:
 ✓ Correct
 o Incorrect
 ✗ Incomplete

Scoring:
 • Correct answer
 • Omitted answer
 • Wrong answer
 • Wrong answer
 • Wrong answer
 • Points are total score on the test

Next:
 Go online to www.collegeboard.org/sat to improve your SAT score, learn more about college and/or financial aid information.

Take the next step today! Go to www.collegeboard.org/quickstart and sign in using your code below.

Also Access Code: **A#2670146P**

Your Answers: Student-Produced Responses

Some of the math problems required you to grid in answers instead of selecting an option. For these questions, you will see the correct answer(s) written out.

Name: **STUDENT, MA B** Year: **2011** Grade: **11** School Code: **123456** Optional Code: **00** Student Copy

PSAT/NMSQT[®] Score Report Plus

Critical Reading **Mathematics** **Writing Skills**

Your Scores

Section Scores Also see your projected SAT[®] scores at www.collegeboard.org/satindex.

Score Range Scores in this range are similar to yours.

Percentile The percentage of test-takers who scored below your score.

50 You scored higher than 51% of juniors.

52 You scored higher than 57% of juniors.

44 You scored higher than 39% of juniors.

National Merit Scholarship Corporation

National Merit Scholarship Corporation (NMSC) uses a Selection Index based on PSAT/NMSQT[®] scores as an initial screen of over 1.5 million students who enter its scholarship programs. (See www.nmsc.org for more information.)

Year Selection Index
Sum of scores in critical reading, mathematics and writing skills.
186

Percentile
Compares your performance with college-bound juniors.
47

Entry Requirements
(Information you provided on your answer sheet.)
High school student: **Yes**
U.S. citizenship: **Yes**

Slightly Informative
If your Selection Index places you among the 15,000 high scorers who qualify for program recognition, you will be notified next September.

Your Skills

These skill categories can help you understand your score and focus your study efforts before you take the SAT.

To learn more about your skills and view suggestions for improvement based on your test performance, visit www.collegeboard.org/quickstart and sign your code below.

Online Access Code
A02670146

Deconstructing the Meaning of Words
9 of 15 questions correct (0 omitted)

Author's Craft: Style, Tone & Technique
3 of 5 questions correct (0 omitted)

Reasoning & Evidence

Number & Operations
12 of 15 questions correct (1 omitted)

Algebra & Functions
5 of 5 questions correct (0 omitted)

Geometry & Measurement

Graphical Relationships between Words
3 of 12 questions correct (1 omitted)

Words & Phrases Used to Modify or Compare
1 of 5 questions correct (2 omitted)

Phrases & Clauses

	Correct Answer	Your Answer
29	7	✓ m
30	3	✓ m
31	4.5 or 9/2	✓ m
32	1000	✓ m
33	10, 12, 14, or 16	✓ h
34	8/5 or 1.6	✓ h
35	29	✓ h
36	108	50.9 h
37	42	4.2 m
38	8	10 h

Key
✓ Correct • See in Manual
○ Omitted • See in Manual
x Incorrect h/hard

Scoring
• Correct answer = PLUS 1 PT
• Omitted answer = 0 POINT
• Wrong answer to multiple-choice = MINUS 1/4 PT
• Wrong answer to math = 20-24 = NO POINTS
• Points are totaled, then converted to the 20-40 scale.

Next Steps

Go online to see your projected SAT scores, learn how to improve them, and find critical college and career planning information.

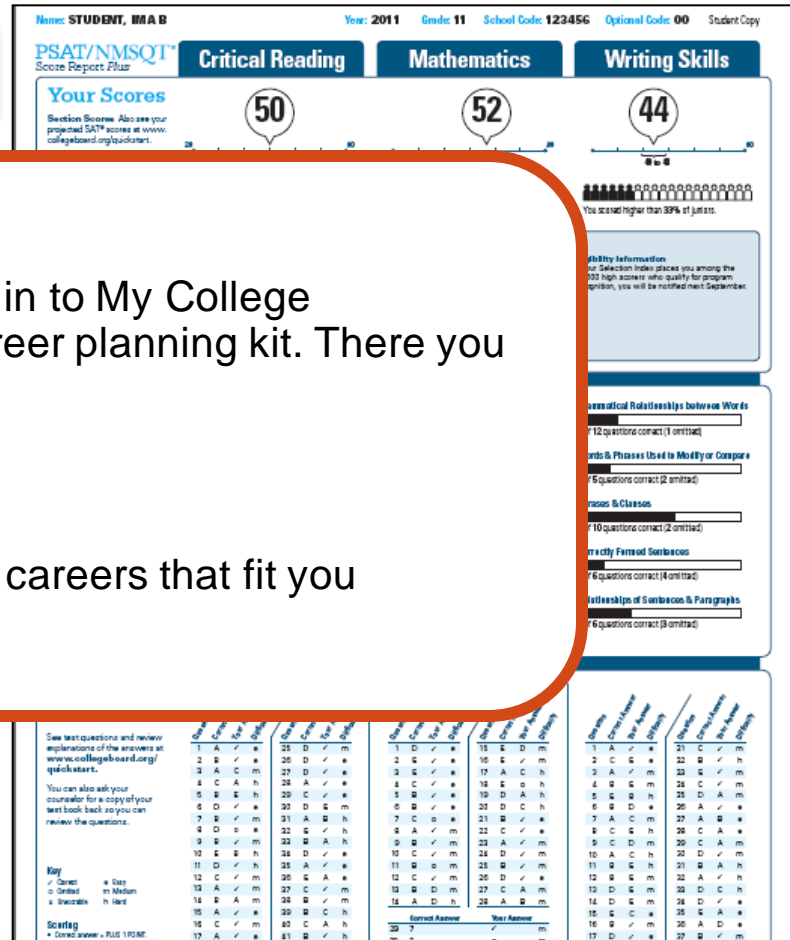
On test day, you told us that you're interested in **Sport & Fitness Administration[®]** Management. To learn more about college majors, visit www.collegeboard.org/quickstart. There you can also:

- Learn about related careers
- Search for colleges
- Take a personality test

Take the next step today! Go to www.collegeboard.org/quickstart and sign in using your code below.

Online Access Code
A02670146P

Next Steps



What's next?

Use the access code on your report to log in to My College QuickStart, a personalized college and career planning kit. There you can:

- Search for colleges
- Get a personalized SAT study plan
- Take a personality test to find majors and careers that fit you

www.collegeboard.org/quicksart

Next Steps

Go online to see your projected SAT scores, learn how to improve them, and find critical college and career planning information.

On test day, you told us that you're interested in **Sport & Fitness Administration/Management**

To learn more about college majors, visit My College QuickStart[™]. There you can also:

- Learn about related careers
- Search for colleges
- Take a personality test

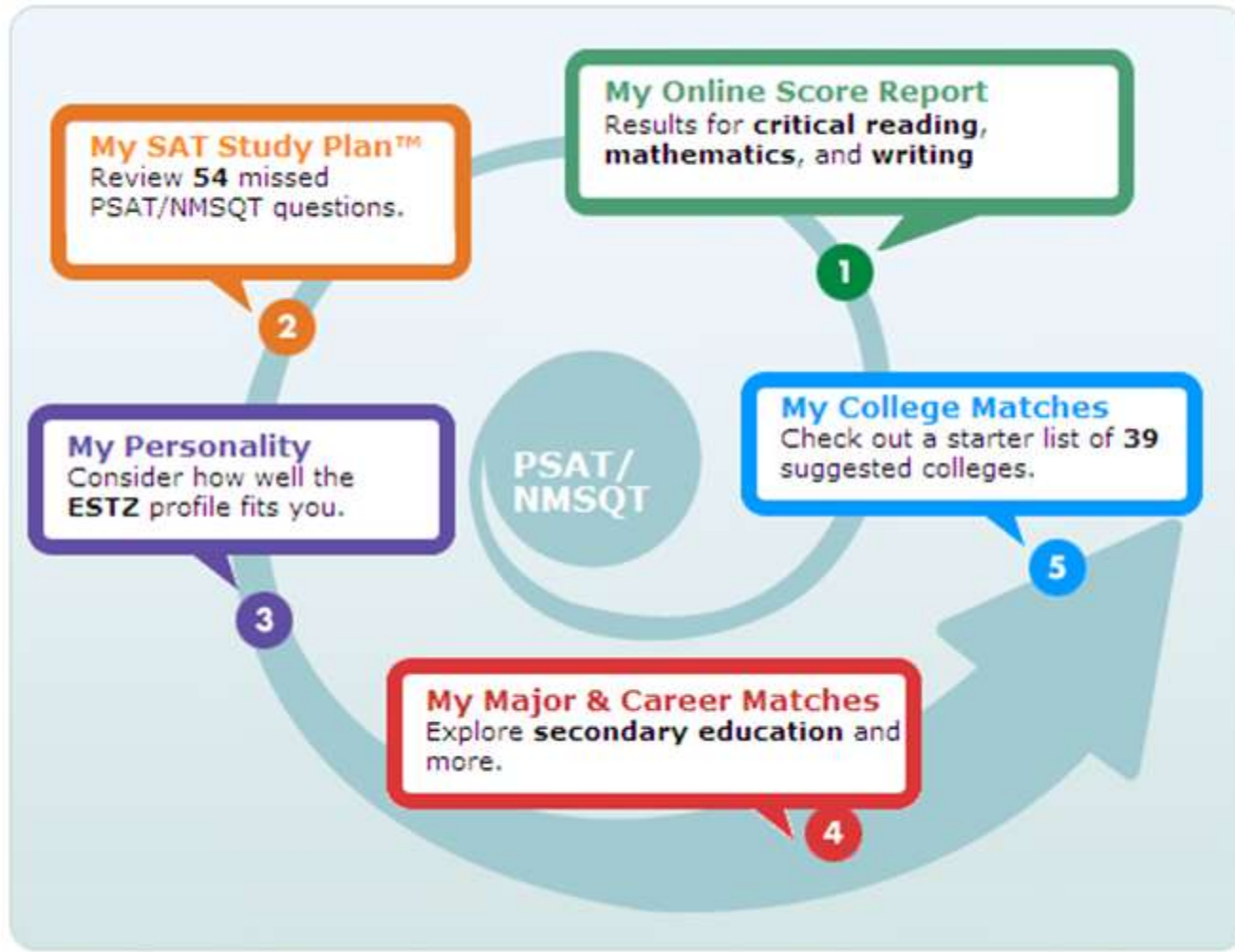
Take the next step today! Go to www.collegeboard.org/quicksart and sign in using your code below.

Online Access Code

A02670146P



My College QuickStart



My College QuickStart

My Online Score Report

- Projected SAT® score ranges
- State percentiles
- You can filter questions
- Questions and answer explanations

My College Quickstart
Home > My Organizer > My College QuickStart > My Online Score Report:

My Online PSAT/NMSQT Score Report

Critical Reading | **Mathematics** | Writing Skills

Your Score

Section Score: 50

Score Range: 46 to 54

Projected SAT Score Range: 470 to 570

National Percentile: You scored higher than 72% of juniors in the nation

State Percentile: You scored higher than 80% of juniors in your state

Your Skills | **Your Answers**

Filter your answers by

-- skills --

-- difficulty --

Correct answers (✓) incorrect answers omitted

	Correct Answer	Your Answer	Difficulty	Content Skill	Process Skill
01	D	✓	hard	Data, Statistics + Probability	Connections
02		omitted	easy	Number + Operations	Representation
03	C	✓	medium	Algebra + Functions	Problem Solving



My College QuickStart

My SAT Study Plan™

- Personalized skills to improve
- SAT practice questions
- An official SAT practice test

My SAT Study Plan™

[Study Plan Home](#) [Meet the SAT](#) [Critical Reading](#) [Mathematics](#) [Writing](#) [Practice Test](#)

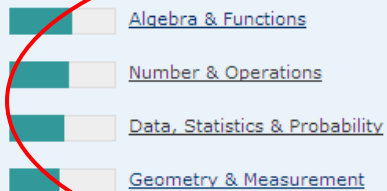
[Review & Practice](#) [My Skills Feedback](#) [Get Test-Taking Advice](#)

My Skills Feedback

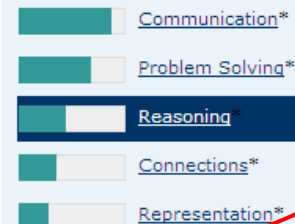
This feedback was created especially for you, based on your PSAT/NMSQT results.

1. Select a skill with a lower performance bar and review the test questions you answered incorrectly. Then try the question again and read the answer explanations.
2. If you find the practice questions too easy, you're probably ready for the next harder level. If you find them too hard, try the next easier level.

Content Skills



Process Skills



* These math-only process skill groups were not included on your Score Report *Plus*.

Skill Group: Reasoning

3 of 7 correct (1 omitted)

Definition

Develop and use mathematical arguments and proofs to explore the truth of conjectures and justify conclusions.

Answers

	#	Questions
Omitted	1	37 (view all)
Incorrect	3	16, 26, 35 (view all)
Correct	3	10, 22, 32 (view all)

Practice Now

Skills **too easy**? [Try some harder practice questions](#)

Skills **too hard**? [Try some easier practice questions](#)



My College QuickStart

INSIGHTS

I.D. ME

EXPLORE MAJORS

FIND A COLLEGE

RESEARCH CAREERS

I.D. ME

Introduction

QuickStarts

ORA Personality Profiler®

View My Profile

THE TROUBLESHOOTERS

ISTA

ISFA

ESTA

ESFA

THE TRADITIONALISTS

ESTZ

ESFZ

ISTZ

ISFZ

THE CATALYSTS

INFA

ENFA

ENFZ

INFZ

The Traditionalists

▶ **ISFZ The Provider**

introverting feeling
sensing organizing

ISFZs are responsible, caring, reserved, and cooperative. As an ISFZ you have a modest style of helping others in orderly and practical ways. You believe it is important to follow rules and laws; similarly, you adhere to routine and prefer to see traditions preserved with little change. You are prone to worry about things beyond your control and may appear to be less confident because of your tendency to become stressed or agitated and not ask for help.

About 6%
of MyRoad
participants

You like to be with a few close friends and family members and to offer personal support wherever and whenever needed. You are good at coordinating tasks and activities for everyone but may become overburdened by taking on other people's problems. Likewise, you don't ask for the recognition you would like to have. You are quietly loyal to family, friends, and groups and institutions that are important to you, and you hope others will be as loyal in return. You avoid interpersonal conflict at all costs.

As an ISFZ you are an organized and focused learner who is good at memorizing facts and details related to people. You reliably meet deadlines and obligations. You excel at coordinating and scheduling your own activities and keep yourself and your belongings neat and in good order. You prefer to work on projects and tasks that are useful in a practical way.

▶ **Your Strengths Include...**

- A practical and dependable nature.



My College QuickStart

My College Matches

- Starter list of colleges
- Criteria to customize search
- Ability to save searches

The screenshot shows a web page for Hunter College. At the top, it says "City University of New York: Hunter College" with the location "New York, New York" and "College Board code: 2301". Below this are navigation buttons: "Add to List", "Compare", "Find Similar", and "Map It". There are also links for "Print Full Profile" and "Send to a Friend". A menu of categories is displayed, including "At a Glance", "Admission", "Cost & Financial Aid", "Academics & Support", "Sports", "Deadlines", "SAT®, AP®, CLEP®", "Majors", "Housing & Campus Life", and "International Students". The main content area is divided into sections: "Main Address" (695 Park Avenue, New York, NY 10065, (212) 772-4000, www.hunter.cuny.edu), "Admission Office" (695 Park Avenue, New York, NY 10065, (212) 772-4490, admissions@hunter.cuny.edu, Contact: William Zlata, Director of Admissions), "Type of School" (Public, Liberal Arts College, Four-year, Coed, Percent applicants admitted: 28%, Regionally Accredited, Middle States Association of Colleges and Schools, College Board member), "Calendar: Semester", "Degrees offered:" (Bachelor's, Master's), "Setting" (Urban setting, Very large city (over 500,000), Commuter campus), and "Size" (Total undergrads: 15,698, First-time degree-seeking freshmen: 2,042, Degree-seeking undergrads: 14,709, Graduate enrollment: 5,560). The page also has a "Sign Out" link and "Help ?" in the top right corner.

City University of New York: Hunter College
New York, New York
College Board code: 2301

Add to List Compare Find Similar Map It

Print Full Profile Send to a Friend

At a Glance Admission Cost & Financial Aid Academics & Support Sports
Deadlines SAT®, AP®, CLEP® Majors Housing & Campus Life International Students

Main Address
695 Park Avenue
New York, NY 10065
(212) 772-4000
www.hunter.cuny.edu

Admission Office
695 Park Avenue
New York, NY 10065
(212) 772-4490
admissions@hunter.cuny.edu
Contact: William Zlata
Director of Admissions

Type of School
Public
Liberal Arts College
Four-year
Coed
Percent applicants admitted: 28%
Regionally Accredited
Middle States Association of Colleges and Schools
College Board member

Calendar: Semester

Degrees offered:

- Bachelor's
- Master's

Setting
Urban setting
Very large city (over 500,000)
Commuter campus

Size
Total undergrads: 15,698
First-time degree-seeking freshmen: 2,042
Degree-seeking undergrads: 14,709
Graduate enrollment: 5,560

My College QuickStart

INSIGHTS

I.D. ME

EXPLORE MAJORS

FIND A COLLEGE

RESEARCH CAREERS

CIVIL ENGINEERING

Overview | High School Courses | College Courses | Career Connection | Perspectives

Majors A-Z

My Interest

High Medium None

Updated: 8-31-2009

Topics

Construction
Engineering &
Management

Environmental
Engineering

Geological
Engineering

Geotechnical
Engineering

Mining Engineering



Overview

The ancient Egyptians built pyramids and levees. The Romans built aqueducts and the Colosseum. The Persians and ancient Greeks undertook massive building projects. Civil engineering has been practiced for thousands of years.

Civil engineers plan, design, build, and repair just about anything you can think of. That includes buildings, bridges, dams, tunnels, highways, stadiums, sewage treatment plants, power plants, airports, and even satellites. These days they're also in demand to repair the damage caused by natural disasters such as earthquakes, hurricanes, and floods. And our crumbling public structures, from bridges to tunnels, all need civil engineers to repair them.

Civil engineers plan, design, build, and repair just about anything you can think of.

Civil engineers specialize in different areas. Transportation engineers, for example, tackle problems like traffic jams and air travel safety. Water resources engineers work to control the flow of rivers and ensure clean drinking water.

As a civil engineering major, you'll take classes in several fields before focusing on one. But you'll find there's overlap in some course work. For instance, you'll learn how to build structures that can stand up to earthquakes in both geotechnical and structural engineering. In a geotechnical engineering course, you'll focus on soil structure and foundation design. But when you study structural engineering, you'll be more concerned with designing



My College QuickStart

Log in to your personalized account at

www.collegeboard.org/quickstart

